



# The Project Management Software for Outlook, Web & Smartphone

Migrating InLoox PM 9.x from MySQL or Oracle to MS SQL server

An InLoox Whitepaper

Published: May 2018

Copyright: © 2018 InLoox GmbH.

You can find up-to-date information at <http://www.inloox.com>

## Contents

Contents .....	1
General information .....	1
Migration of InLoox to MS SQL Server .....	2

The information contained in this document represents the current view of InLoox on the issues discussed as of the date of publication. Because InLoox must respond to changing market conditions, it should not be interpreted to be a commitment on the part of InLoox, and InLoox cannot guarantee the accuracy of any information presented after the date of publication.

This White Paper is for informational purposes only. INLOOX MAKES NO WARRANTIES, EXPRESS, IMPLIED OR STATUTORY, AS TO THE INFORMATION IN THIS DOCUMENT.

Complying with all applicable copyright laws is the responsibility of the user. Without limiting the rights under copyright, no part of this document may be reproduced, stored in or introduced into a retrieval system, or transmitted in any form or by any means (electronic, mechanical, photocopying, recording, or otherwise), or for any purpose, without the express written permission of InLoox GmbH.

© 2018 InLoox GmbH. All rights reserved.

IQ medialab and InLoox are either registered trademarks or trademarks of InLoox GmbH in Germany and/or other countries.

The names of actual companies and products mentioned herein may be the trademarks of their respective owners.

## General information

This document describes the steps required to successfully migrate a InLoox 9 database from MySQL or Oracle database management system to a Microsoft SQL Server system.



Please note that the **support** for **MySQL** and **Oracle** as database systems has ended with **InLoox PM 10**. Therefore InLoox provides a possibility, to migrate from one of these database management systems to **Microsoft SQL Server**.



For the migration you need the InLoox Outlook Client **at least** in version **9.0.14**. You can download the latest release from our **homepage** at any time:

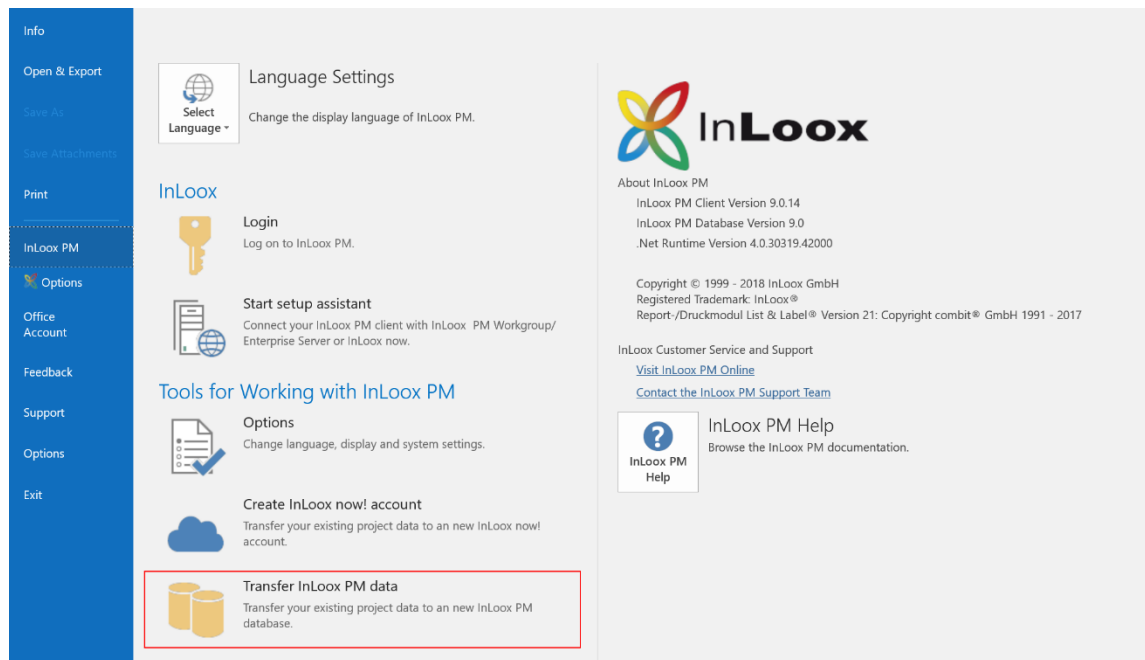
<https://www.inloox.com/support/downloads/product-releases/>



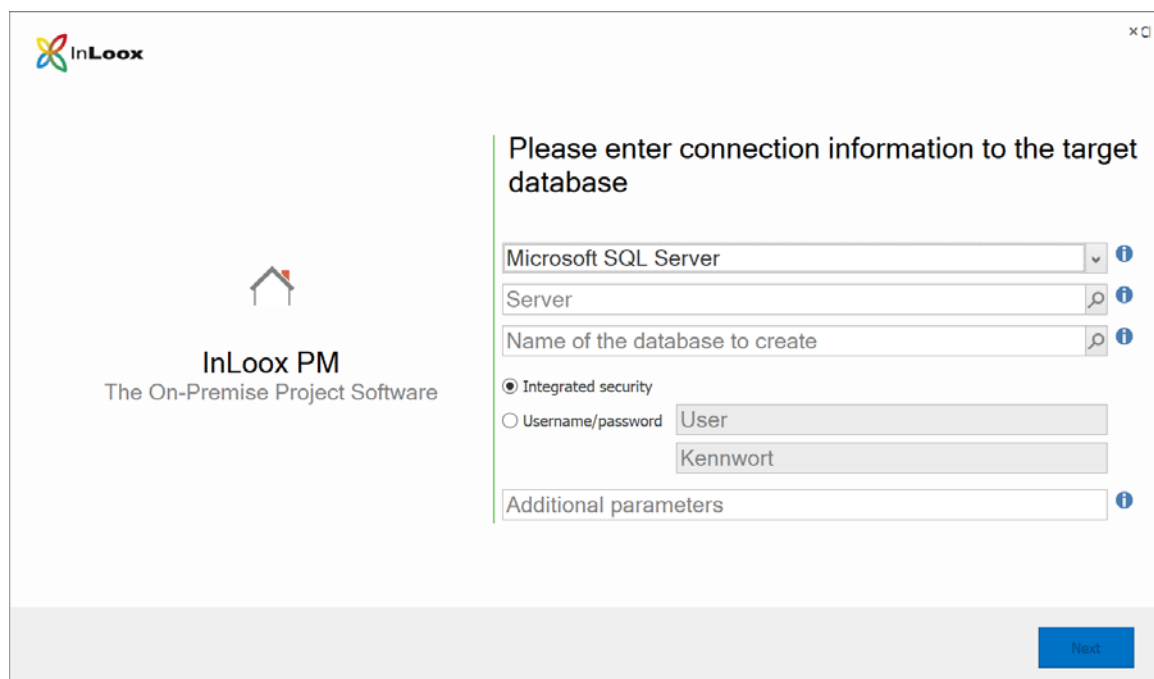
For the migration you need a Outlook User / Outlook client respectively an Universal User license. Furthermore you need the InLoox permission "**Administrator**".

## Migration of InLoox to MS SQL Server

1. Start **Outlook**
2. Continue when you are connected to your **MySQL** respectively **Oracle** database and have the Inloox permission **"Administrator"**.
3. Select „File“ – „InLoox PM“ – „Transfer InLoox PM data“



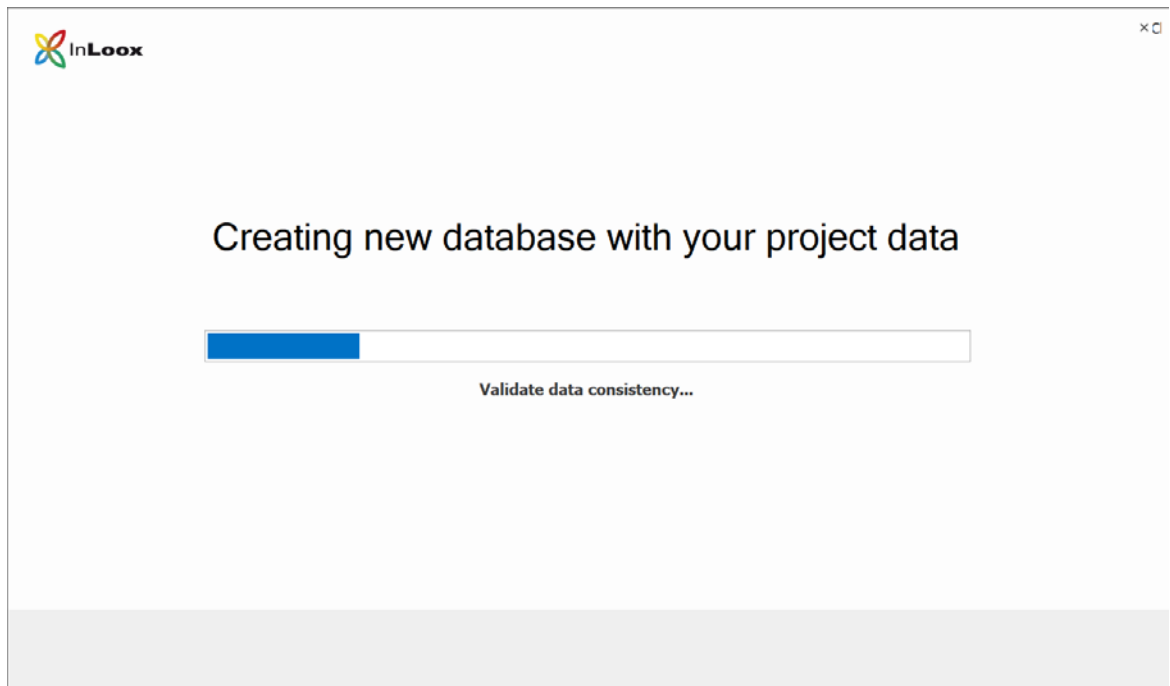
4. A new dialog opens.



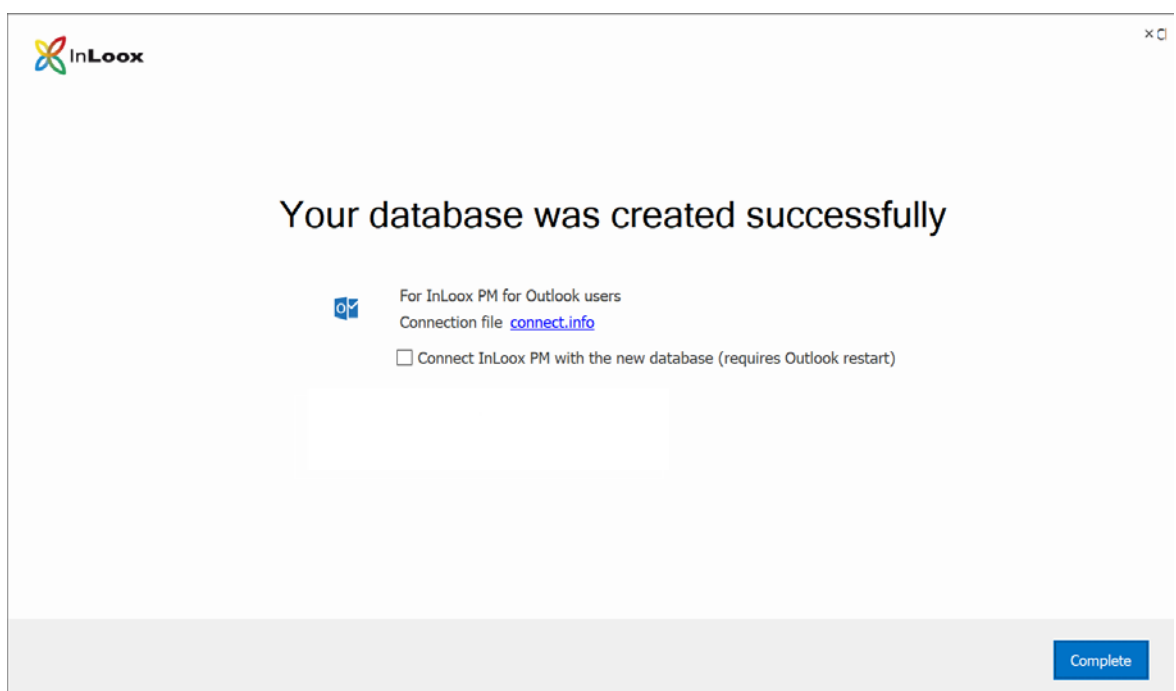
5. Enter your connection information to an existing **Microsoft SQL Server**. InLoox PM 9 requires at least a MS SQL Server in Version **2008** or later.

The name of the database can be freely selected. The database will be created **automatically** by InLoox and your existing project data will be imported.

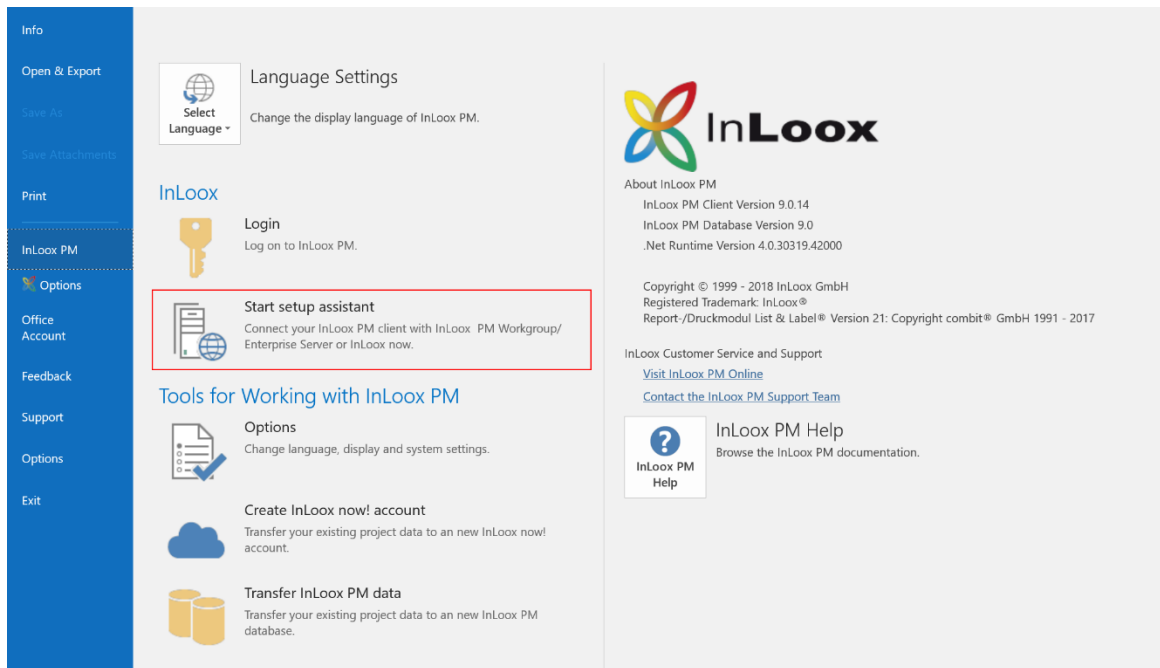
6. Select **Next**.
7. The migration starts automatically.



8. After a successful completion of the migration you can connect the Outlook client directly with the newly created database.



9. You can also create the connect.info file. This file can be used to easily connect with your other clients. Use the InLoox setup assistant to do so.



The screenshot shows the 'Options' dialog box in InLoox PM. The left sidebar contains menu items: Info, Open & Export, Save As, Save Attachments, Print, InLoox PM, Options (highlighted), Office Account, Feedback, Support, Options, and Exit. The main content area is divided into several sections:

- Language Settings:** Includes a 'Select Language' button and the text 'Change the display language of InLoox PM.'
- InLoox:** Contains a 'Login' button with a key icon and the text 'Log on to InLoox PM.'
- Start setup assistant:** This section is highlighted with a red box. It features a globe icon and the text: 'Connect your InLoox PM client with InLoox PM Workgroup/Enterprise Server or InLoox now.'
- Tools for Working with InLoox PM:** This section includes:
  - Options:** 'Change language, display and system settings.'
  - Create InLoox now! account:** 'Transfer your existing project data to a new InLoox now! account.'
  - Transfer InLoox PM data:** 'Transfer your existing project data to a new InLoox PM database.'

On the right side of the dialog, there is an 'About InLoox PM' section with the InLoox logo and version information: 'InLoox PM Client Version 9.0.14', 'InLoox PM Database Version 9.0', and '.Net Runtime Version 4.0.30319.42000'. Below this is copyright information: 'Copyright © 1999 - 2018 InLoox GmbH', 'Registered Trademark: InLoox®', and 'Report-/Druckmodul List & Label® Version 21: Copyright combit® GmbH 1991 - 2017'. At the bottom right, there is an 'InLoox PM Help' section with a question mark icon and the text 'Browse the InLoox PM documentation.'